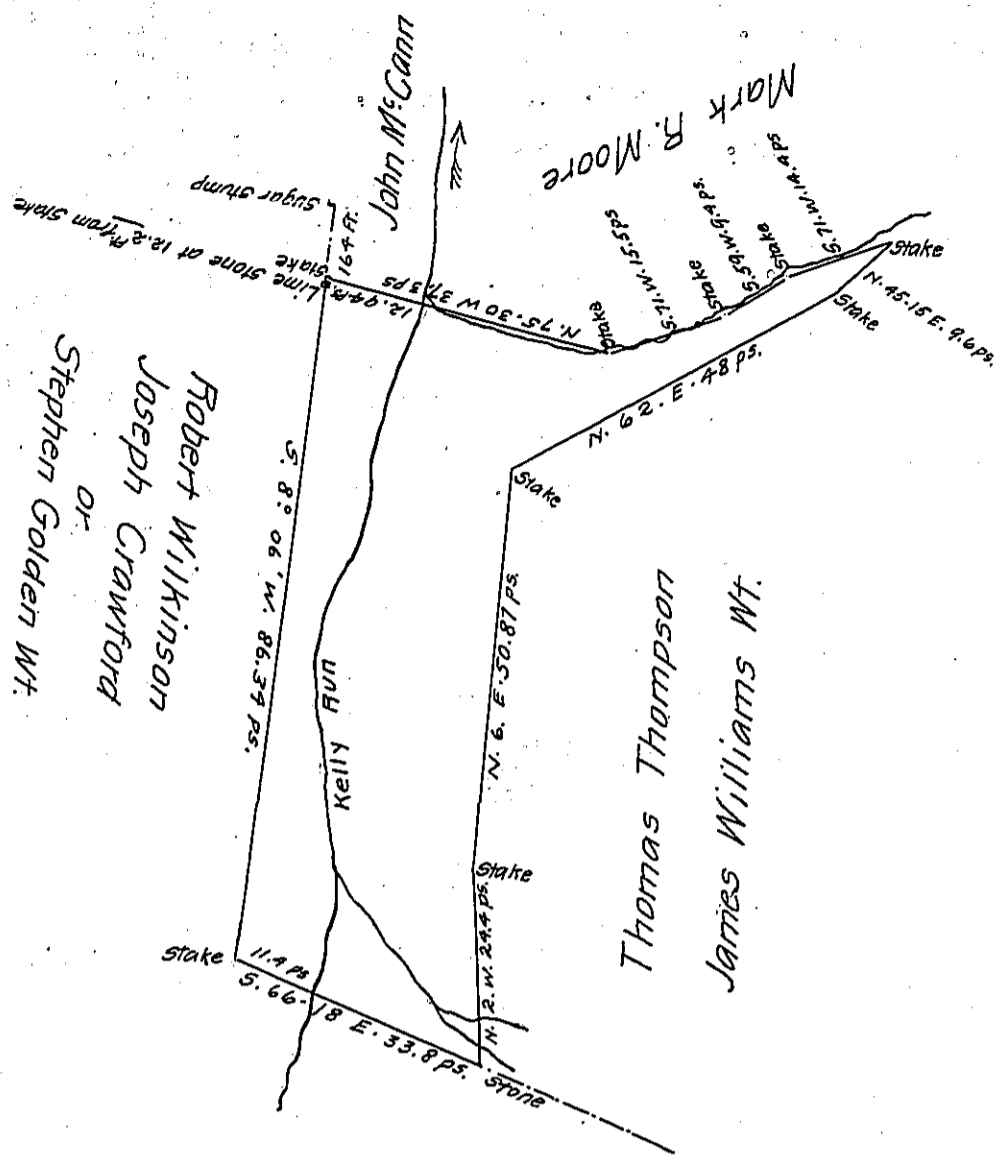


FORM No. 1.



Scale of Plan

30 ps = 1 inch

A Draft of a tract of land situated in the Township of Luzerne and County of Fayette, containing Sixteen (16) acres, 92.4 perches and allowance of six per cent. for roads, etc. Surveyed the 19th. day of December ¹⁹⁰⁰~~1899~~, in pursuance of a warrant granted to John M. Cann. dated the 10th. day of July 1900 ~~18~~.

S. M. Foust

County Surveyor

To James W. Latta, Esq.,
 Secretary of Internal Affairs

IN TESTIMONY that the above is a copy of the original remaining on file in the Department of Internal Affairs of Pennsylvania, made conformably to an Act of Assembly approved the 16th day of February, 1833, I have hereunto set my Hand and caused the Seal of said Department to be affixed at Harrisburg, this nineteenth day of April 1906

Loach J. Brown
 Secretary of Internal Affairs.